



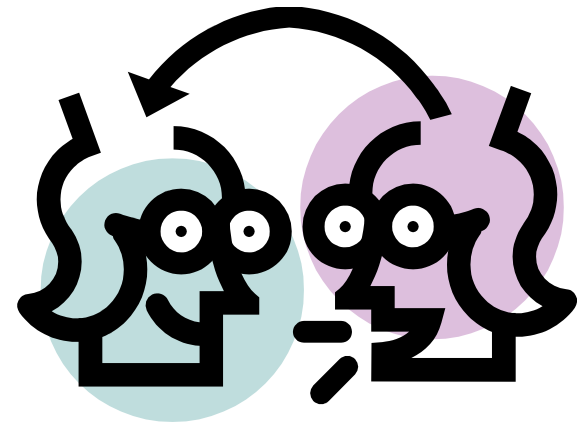
Tone

Understanding the element of tone

Contents

LOGO

- ❖ **What is tone?**
- ❖ **Purpose of Tone**
- ❖ **Elements to make the tone**
- ❖ **How to identify tone?**



What is Tone?

Tone: the implied attitude of a writer toward the subject and characters of a work.



AUTHOR

ATTITUDE



CHARACTERS

Examples of tone

LOGO

Think of tone as an emotion, since the tone indicates how the author “feels” about his subject matter. Examples: happy, sad, formal, informal, ironic, playful, serious, angry, naïve, critical, condescending, startling, shocking, passionate, uncaring, vengeful, and many others.

LOGO

STONE EXAMPLE

Finally, one of the girls pointed to the grass and giggled.

"Meow!" A cat sat on the edge of the field and licked its paw. They did indeed have company. The girls ran over to the cat and pet his belly. They laughed and the cat sauntered back to the field.

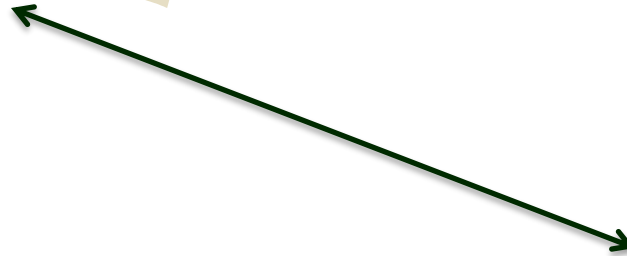
The tone of this passage is happy or content.

What is the purpose of tone?:

LOGO



Tone communicates the author's perspective or point of view on his or her topic.



Elements to make the tone

LOGO

❖ Elements contributing to the tone



Tips to identify tone

- ❖ Tone must be inferred through the use of descriptive words.
- ❖ In other words, one can recognize the tone/attitude by the language/word choices the author uses.
- ❖ The language choices will reveal his or her perspective/opinion.

Note:

❖ Be careful to separate mood from tone.

The tone shows you an author's opinion and perspective on the topic, while mood is the feeling and atmosphere of the text as experienced by the reader.

Tone versus Mood

